

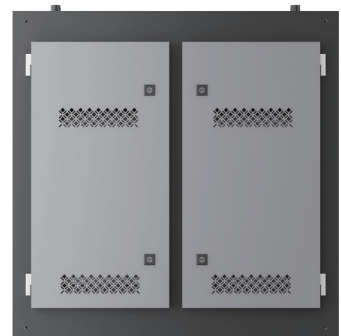
# CV18 Series

## Sheet Metal Cabinet

# Outdoor LED Display Cabinet

### Classic and cost-effective outdoor fixed LED display solutions

Create the perfect outdoor viewing experience with the CV18 Outdoor LED Cabinet. CV18 series offers remarkable high resolution, vivid colors, and maximum brightness for unparalleled clarity in any outdoor environment. The cabinet is designed to withstand all weather conditions and keep your visuals looking their best. Enjoy stunning visuals with CV18 outdoor LED Cabinets.



- Wide viewing angle
- Rear maintenance
- Durable and Reliable

### Cost-effective

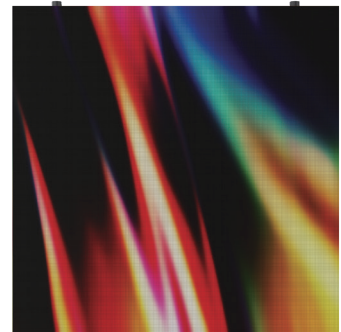
It is made of iron sheet metal, easy to design the cabinet structure, and comes with high waterproof performance, and strong and durable features, CV18 provides a classic and cost-effective outdoor fixed LED display solution.

### Customizable

The shape and size of the cabinet are flexible and can be customized.

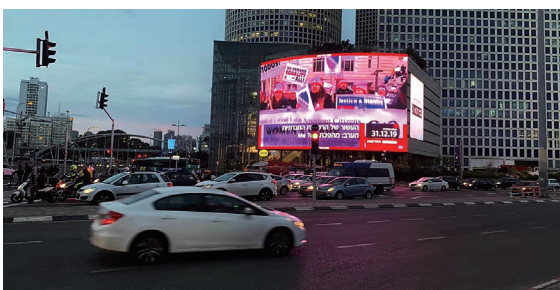
### Flexible

The sheet metal cabinet makes it suitable for any LED display modules with different pixel pitches.



### Wide Viewing Angle

CV18 series with wide viewing angles offer enhanced visibility, ensuring clear and consistent images can be seen from various directions, maximizing audience reach and engagement.



### Flexible and Customizable

CV18 series LED display cabinets allow for tailored solutions to fit specific architectural designs, optimizing space usage and enhancing aesthetic integration in diverse environments.



## SPECIFICATIONS

Item	CV3S-18	CV4S-18	CV5S-18	CV6S-18		CV8S-18	CV10S-18
LED Configuration	SMD	SMD	SMD	SMD	SMD	SMD	SMD
Pixel Pitch (mm)	3	4	5	5.9	6	8	10
Module Resolution (WxH)	104x52	80x40	64x32	54x27	32x32	40x20	32x16
Module Dimension (WxHxD, mm)	320x160x16.3	320x160x16.4	320x160x17.2	320x160x17	192x192x17.4	320x160x17.3	320x160x18.4
Module Weight (kg)	0.48	0.46	0.5	0.47	0.34	0.46	0.49
Module Composition (WxH)	3x6	3x6	3x6	3x6	5x5	3x6	3x6
Cabinet Resolution (WxH)	312x312	240x240	192x192	162x162	162x162	120x120	96x96
Cabinet Dimension (WxHxD, mm)	960x960x136.3	960x960x136.4	960x960x137.2	960x960x137	960x960x137.4	960x960x137.3	960x960x138.4
Cabinet Area (m <sup>2</sup> )	0.9216						
Cabinet Weight (kg/m <sup>2</sup> )	51						
Pixel Density (Point/m <sup>2</sup> )	105625	62500	40000	28476	28476	15625	10000
Cabinet Flatness (mm)	≤0.6	≤0.6	≤0.6	≤0.6	≤0.6	≤0.6	≤0.6
IP Level (front/back)	IP65/IP54						
Brightness (nits)(after calibration)	≥4000	4500~5000	5000~6000	≥4500	≥4500	≥4500	5000~6000
Color Temperature (K)	3000~15000 adjustable						
Viewing Angle (H) °	160						
Viewing Angle (V) °	140						
Deviation of LED luminance Center	<3%						
Brightness Uniformity (after calibration)	≥97%						
Chromaticity Uniformity (after calibration)	Wthin ±0.003Cx,Cy						
Contrast Ratio	5000:1						
Power Consumption (max) (W/m <sup>2</sup> )	712	861	750	694	768	≤809	800
Power Consumption (avg) (W/m <sup>2</sup> )	237	287	250	231	256	≤270	265
Input Voltage(V)	AC100~240V (50/60Hz)						
Drive Mode	Constant Current Drive						
Frame Rate(Hz)	50&60						
Refresh Rate (Hz)	≥3840	≥3840/≥1920 optional					
Lifetime (hrs)	100,000						
Operating Temperature (°C)	-20~40						
Storage Temperature (°C)	-20~60						
Operating Humidity (RH)	10~80% no condensation						
Storage Humidity (RH)	10~85% no condensation						

Remark: Above data is subject to change without prior notice



### LEYARD HONG KONG INTERNATIONAL CO., LIMITED

Leyard Southern LED Industrial Park, No.6, Guanhe Rd, Longhua District, Shenzhen, China  
 Email: intlmarketing@leyard.com | Website: www.leyardhk.com