

LEYARD

# VHC SERIES INDOOR 27" | 32"

## LED DISPLAY CABINET

BY ADOPTING VHD SERIES LED MODULE



# VHD SERIES LED DISPLAY MODULE

---

## [ HIGHLIGHT FEATURES ]

### VHD32 SERIES

---



- ◆ 3-in-1 compact design, receiver card, Hub board and PSU board are highly integrated.
- ◆ Power/signal is transferred in one flat cable.
- ◆ The modules are connected in star link instead of daisy chain to avoid the inline failure.



### VHD27 SERIES

---



- ◆ 3-in-1 compact design, receiver card, Hub board and PSU board are highly integrated.
- ◆ Power/ signal is transferred in one flat cable.
- ◆ The modules are connected in star link instead of daisy chain to avoid the inline failure.
- ◆ Two module design: common cathode and common anode.
- ◆ Cabinet available for customers used to it, dual power and data redundancy.

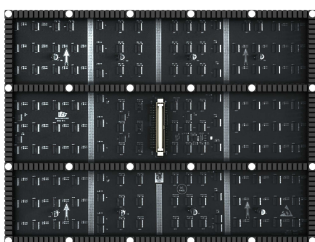
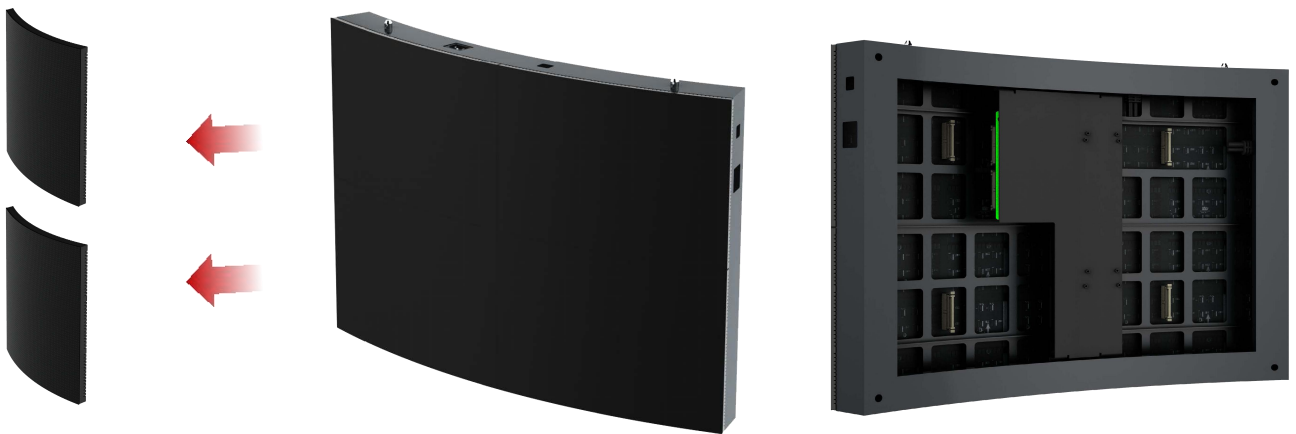


- ◆ 3M adhesive on the bottom and light board bonding.
- ◆ Size of soft module: 320X240 silicone+soft board.
- ◆ Common VHC module connector.
- ◆ Embedded magnet, evenly distributed.
- ◆ Module Bending angle is large.



### Structure Characteristics

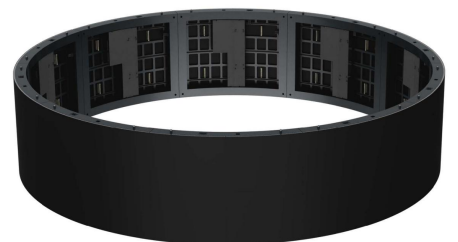
Indoor simple sheet metal cabinet; simple structure. The back collection of power signal mounting board module is directly attached to the cabinet. The size according to the module can be arbitrarily customized indoor simple sheet metal cabinet.



LED display module diorama



LED display module arc diagram



LED display cabinet curved splicing

## VHC SERIES LED DISPLAY CABINET

Item	VHC27F009	VHC27F012	VHC27F015	VHC27F018	VHC27F020	VHC27F025
Pixel Configuration	4in1	SMD	SMD	SMD	SMD	SMD
Pitch (mm)	0.9375	1.25	1.5625	1.875	2	2.5
Module Resolution (WxH)	320x360	240x270	192x216	160x180	150x168	120x135
Module Size (mm)(WxHxD)	300x337.5x13	300x337.5x13	300x337.5x13	300x337.5x13	300x337.5x13	300x337.5x13
Module Weight (Kg)	0.95	0.95	0.95	0.95	0.95	0.95
Module Composition (WxH)	2x1	2x1	2x1	2x1	2x1	2x1
Cabinet Resolution (WxH)	640x360	480x270	384x216	320x180	300x168	240x135
Cabinet Size (mm)(WxHxD)	600x337.5x72	600x337.5x72	600x337.5x72	600x337.5x72	600x337.5x72	600x337.5x72
Unit Area (m <sup>2</sup> )	0.2025	0.2025	0.2025	0.2025	0.2025	0.2025
Cabinet Weight (kg/m <sup>2</sup> )	28	28	28	28	28	28
Pixel Density (pixel/m <sup>2</sup> )	1136356	640000	409600	284089	250000	160000
Surface Flatness (mm)	≤0.3	≤0.3	≤0.3	≤0.3	≤0.3	≤0.3
Brightness Calibration	Yes	Yes	Yes	Yes	Yes	Yes
Color Calibration	Yes	Yes	Yes	Yes	Yes	Yes
Brightness (nits)	600	600	600	600	600	600
Color Temperature (K)	3000 ~ 10000 Adjustable					
Horizontal Viewing Angle (°)	160	160	160	160	160	160
Vertical Viewing Angle (°)	140	140	140	140	140	140
Deviation of LED Luminance Center	<3%	<3%	<3%	<3%	<3%	<3%
Brightness Uniformity	≥97%	≥97%	≥97%	≥97%	≥97%	≥97%
Chromaticity Uniformity	Within ±0.003Cx,Cy					
Contrast Ratio	5000:1	5000:1	5000:1	5000:1	5000:1	5000:1
Max Power Consumption (W/m <sup>2</sup> )	600	580	530	510	480	460
Average Power Consumption (W/m <sup>2</sup> )	295	255	225	205	195	180
Power Supply	AC100 ~ 240V (50/60Hz)					
Drive Mode	Constant current drive					
Scanning Mode	46s	60s	54s	60s	42s	30s
Frame Rate (Hz)	50&60	50&60	50&60	50&60	50&60	50&60
Refresh Rate (Hz)	3840	3840	3840	3840	3840	3840
Lifetime (hrs)	100,000	100,000	100,000	100,000	100,000	100,000
Operation Temperature (°C)	-20 ~ 40	-20 ~ 40	-20 ~ 40	-20 ~ 40	-20 ~ 40	-20 ~ 40
Storage Temperature (°C)	-40 ~ 60	-40 ~ 60	-40 ~ 60	-40 ~ 60	-40 ~ 60	-40 ~ 60
Operation Humidity (RH)	10 ~ 80% no condensation					
Storage Humidity (RH)	10 ~ 85% no condensation					

Remark: Above data is subject to change without previous notice.

Item	VHC27E009	VHC27E012	VHC27E015	VHC27E018	VHC27E020	VHC27E025
Pixel Configuration	4in1	SMD	SMD	SMD	SMD	SMD
Pitch (mm)	0.9375	1.25	1.5625	1.875	2	2.5
Module Resolution (WxH)	320x360	240x270	192x216	160x180	150x168	120x135
Module Size (mm)(WxHxD)	300x337.5x13	300x337.5x13	300x337.5x13	300x337.5x13	300x337.5x13	300x337.5x13
Module Weight (Kg)	0.95	0.95	0.95	0.95	0.95	0.95
Module Composition (WxH)	2x1	2x1	2x1	2x1	2x1	2x1
Cabinet Resolution (WxH)	640x360	480x270	256x216	320x180	300x168	240x135
Cabinet Size (mm)(WxHxD)	600x337.5x72	600x337.5x72	600x337.5x72	600x337.5x72	600x337.5x72	600x337.5x72
Unit Area (m <sup>2</sup> )	0.2025	0.2025	0.2025	0.2025	0.2025	0.2025
Cabinet Weight (kg/m <sup>2</sup> )	28	28	28	28	28	28
Pixel Density (pixel/m <sup>2</sup> )	1136356	640000	409600	284089	250000	160000
Surface Flatness (mm)	≤0.3	≤0.3	≤0.3	≤0.3	≤0.3	≤0.3
Brightness Calibration	Yes	Yes	Yes	Yes	Yes	Yes
Color Calibration	Yes	Yes	Yes	Yes	Yes	Yes
Brightness (nits)	600	600	600	600	600	600
Color Temperature (K)	3000 ~ 10000 Adjustable					
Horizontal Viewing Angle (°)	160	160	160	160	160	160
Vertical Viewing Angle (°)	140	140	140	140	140	140
Deviation of LED Luminance Center	<3%	<3%	<3%	<3%	<3%	<3%
Brightness Uniformity	≥97%	≥97%	≥97%	≥97%	≥97%	≥97%
Chromaticity Uniformity	Within ±0.003Cx,Cy					
Contrast Ratio	5000:1	5000:1	5000:1	5000:1	5000:1	5000:1
Max Power Consumption (W/m <sup>2</sup> )	580	550	510	480	460	420
Average Power Consumption (W/m <sup>2</sup> )	275	235	215	195	175	170
Power Supply	AC100 ~ 240V (50/60Hz)					
Drive Mode	Constant current drive					
Scanning Mode	46s	60s	54s	60s	42s	30s
Frame Rate (Hz)	50&60	50&60	50&60	50&60	50&60	50&60
Refresh Rate (Hz)	3840	3840	3840	3840	3840	3840
Lifetime (hrs)	100,000	100,000	100,000	100,000	100,000	100,000
Operation Temperature (°C)	-20 ~ 40	-20 ~ 40	-20 ~ 40	-20 ~ 40	-20 ~ 40	-20 ~ 40
Storage Temperature (°C)	-40 ~ 60	-40 ~ 60	-40 ~ 60	-40 ~ 60	-40 ~ 60	-40 ~ 60
Operation Humidity (RH)	10 ~ 80% no condensation					
Storage Humidity (RH)	10 ~ 85% no condensation					

Remark: Above data is subject to change without previous notice.

Item	VHC32F012	VHC32F015	VHC32F018	VHC27F020	VHC32F025
Pixel Configuration	SMD	SMD	SMD	SMD	SMD
Pitch (mm)	1.25	1.59	1.88	2	2.5
Module Resolution (WxH)	256x192	204x153	170x128	160x120	128x96
Module Size (mm)(WxHxD)	320x240x13	320x240x13	320x240x13	320x240x13	320x240x13
Module Weight (Kg)	0.78	0.78	0.78	0.78	0.78
Module Composition (WxH)	2x2	2x2	2x2	2x2	2x2
Cabinet Resolution (WxH)	512x384	408x306	340x256	320x240	256x192
Cabinet Size (mm)(WxHxD)	640x480x72	640x480x72	640x480x72	640x480x72	640x480x72
Unit Area (m <sup>2</sup> )	0.3072	0.3072	0.3072	0.3072	0.3072
Cabinet Weight (kg/m <sup>2</sup> )	30	30	30	30	30
Pixel Density (pixel/m <sup>2</sup> )	640000	401956	283333	250000	160000
Surface Flatness (mm)	≤0.3	≤0.3	≤0.3	≤0.3	≤0.3
Brightness Calibration	Yes	Yes	Yes	Yes	Yes
Color Calibration	Yes	Yes	Yes	Yes	Yes
Brightness (nits)	600	600	600	600	600
Color Temperature (K)	3000 ~ 10000 Adjustable				
Horizontal Viewing Angle (°)	160	160	160	160	160
Vertical Viewing Angle (°)	140	140	140	140	140
Deviation of LED Luminance Center	<3%	<3%	<3%	<3%	<3%
Brightness Uniformity	≥97%	≥97%	≥97%	≥97%	≥97%
Chromaticity Uniformity	Within ±0.003Cx,Cy				
Contrast Ratio	5000:1	5000:1	5000:1	5000:1	5000:1
Max Power Consumption (W/m <sup>2</sup> )	580	530	510	480	460
Average Power Consumption (W/m <sup>2</sup> )	255	225	205	195	180
Power Supply	AC100 ~ 240V (50/60Hz)				
Drive Mode	Constant current drive				
Scanning Mode	48s	51s	43s	40s	32s
Frame Rate (Hz)	50&60	50&60	50&60	50&60	50&60
Refresh Rate (Hz)	3840	3840	3840	3840	3840
Lifetime (hrs)	100,000	100,000	100,000	100,000	100,000
Operation Temperature (°C)	-20 ~ 40	-20 ~ 40	-20 ~ 40	-20 ~ 40	-20 ~ 40
Storage Temperature (°C)	-40 ~ 60	-40 ~ 60	-40 ~ 60	-40 ~ 60	-40 ~ 60
Operation Humidity (RH)	10 ~ 80% no condensation				
Storage Humidity (RH)	10 ~ 85% no condensation				

Remark: Above data is subject to change without previous notice.

## VHD32 SOFT SERIES LED DISPLAY MODULE

Item	VHD32F012-R	VHD32F015-R	VHD32F018-R	VHD32F020-R	VHD32F025-R
Pixel Configuration	SMD	SMD	SMD	SMD	SMD
Pitch (mm)	1.25	1.59	1.88	2	2.5
Module Resolution (WxH)	256×192	201×151	170×128	160×120	128×96
Module Size (mm)(WxHxD)	320×240×13	320×240×13	320×240×13	320×240×13	320×240×13
Module Weight (Kg)	0.78	0.78	0.78	0.78	0.78
Pixel Density (pixel/m <sup>2</sup> )	640000	394384	283333	250000	160000
Minimum Diameter of Inner and Outer Arc (m)	2m	2m	2m	2m	2m
Brightness Calibration	Yes	Yes	Yes	Yes	Yes
Color Calibration	Yes	Yes	Yes	Yes	Yes
Brightness (nits)	600	600	600	600	600
Color Temperature (K)	3000—10000 Adjustable				
Horizontal Viewing Angle (°)	160	160	160	160	160
Vertical Viewing Angle (°)	140	140	140	140	140
Deviation of LED Luminance Center	<3%	<3%	<3%	<3%	<3%
Brightness Uniformity	≥97%	≥97%	≥97%	≥97%	≥97%
Chromaticity Uniformity	Within ±0.003Cx,Cy				
Contrast Ratio	5000:1	5000:1	5000:1	5000:1	5000:1
Max Power Consumption (W/m <sup>2</sup> )	580	530	510	480	460
Average Power Consumption (W/m <sup>2</sup> )	255	225	205	195	180
Power Supply	DC4.5V---5V	DC4.5V---5V	DC4.5V---5V	DC4.5V---5V	DC4.5V---5V
Drive Mode	Constant current drive				
Scanning Mode	48s	51s	43s	40s	32s
Frame Rate (Hz)	50&60	50&60	50&60	50&60	50&60
Refresh Rate (Hz)	3840	3840	3840	3840	3840
Lifetime (hrs)	100,000	100,000	100,000	100,000	100,000
Operation Temperature (°C)	-20 ~ 40	-20 -- 40	-20 -- 40	-20 -- 40	-20 -- 40
Storage Temperature (°C)	-40 ~ 60	-40 -- 60	-40 -- 60	-40 -- 60	-40 -- 60
Operation Humidity (RH)	10 ~ 80% no condensation				
Storage Humidity (RH)	10 ~ 85% no condensation				

Remark: Above data is subject to change without previous notice.

**LEYARD HONG KONG INTERNATIONAL CO., LIMITED**

Leyard LED South Industry Park, No.6, Guanhe Road, Guanlan, Longhua District, Shenzhen, China  
 Email: intlmarketing@leyard.com | Website: sz.leyard.com