

INDOOR FINE PITCH

GF SERIES LED DISPLAY CABINET

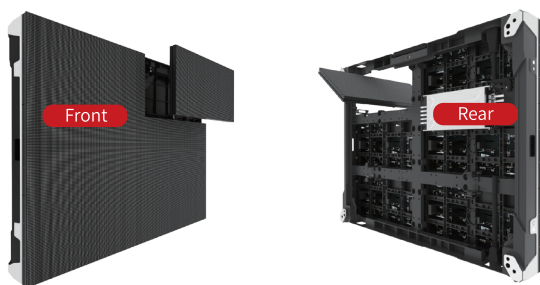
KEY FEATURES

- > Front / rear installation, and fully front / rear access.
- > High-strength aluminum alloy die-casting structure, light weight, non-deformation, and good heat dissipation efficiency.
- > Positioning pins for higher splicing accuracy.
- > Cascade line transmission, generic cables to ensure stability and reliability at a lower cost.
- > X/Y/Z 6-axis alignment is possible when stitching the cabinets.
- > Corner protection design at the bottom to prevent damage to the LEDs.
- > Power and signal redundancy optional.



MAINTENANCE METHOD

GF series can be maintained/installed in full front and rear.



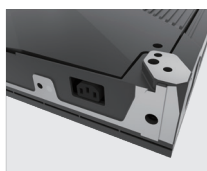
SUPER SLIM DESIGN

Classic 4:3 ratio, the cabinet is made of aluminum alloy die-casting process, the thickness is only 74mm.



CABINET HANDLE

Spring-loaded, user-friendly design.



CONCEALED POWER CONNECTOR

No cable on the back of the screen, concise apprance.



STATUS INDICATOR

Red represents the power status and green represents the signal status.



EDGE PROTECTION DESIGN

Edge protection is added to the bottom of the cabinet to prevent damage to the LEDs.

SPECIFICATIONS

Item	GF1.2	GF1.5	GF1.6	GF1.8	GF2	GF2.5	GF3	GF4
Pixel Configuration	SMD	SMD	SMD	SMD	SMD	SMD	SMD	SMD
Pitch (mm)	1.25	1.538	1.667	1.86	2	2.5	3.076	4
Module Resolution (WxH)	256x128	208x104	192x96	172x86	160x80	128x64	104x52	80x40
Module Size (mm)(WxH)	320x160	320x160	320x160	320x160	320x160	320x160	320x160	320x160
Module Weight (Kg)	0.48±0.05	0.48±0.05	0.48±0.05	0.48±0.05	0.45±0.05	0.45±0.05	0.275±0.05	0.4±0.05
Module Composition (WxH)	2x3	2x3	2x3	2x3	2x3	2x3	2x3	2x3
Cabinet Resolution (WxH)	512x384	416x312	384x288	344x258	320x240	256x192	208x156	160x120
Pixel Density (Point/m ²)	640000	422500	360000	288906	250000	160000	105625	62500
Cabinet Dimension (WxHxD, mm)	640x480x74	640x480x74	640x480x74	640x480x74	640x480x74	640x480x74	640x480x74	640x480x74
Unit Area (m ²)	0.3072	0.3072	0.3072	0.3072	0.3072	0.3072	0.3072	0.3072
Weight (kg/m ²)	7	7	7	7	7	7	7	7
Flatness(mm)	≤0.3	≤0.3	≤0.3	≤0.3	≤0.3	≤0.3	≤0.3	≤0.3
Brightness (nits)	≥450	≥450	≥450	≥450	≥450	≥600	≥600	≥600
Color Temperature (K)	3000—15000 Adjustable							
Horizontal Viewing Angle (°)	160	160	160	160	160	160	160	160
Vertical Viewing Angle (°)	140	140	140	140	140	140	140	140
Deviation of LED Luminance Center	<3%	<3%	<3%	<3%	<3%	<3%	<3%	<3%
Chromaticity Uniformity (after correction)	±0.003Cx,Cy within							
Brightness Uniformity	≥97%	≥97%	≥97%	≥97%	≥97%	≥97%	≥97%	≥97%
Contrast Ratio	5000:1	5000:1	5000:1	5000:1	5000:1	5000:1	5000:1	5000:1
Max Power Consumption (W/m ²)	≤490	≤490	≤490	≤490	≤490	≤490	≤490	≤490
Average Power Consumption (W/m ²)	≤150	≤150	≤150	≤150	≤150	≤150	≤150	≤150
Power Supply (V)	AC: 200~240V	AC: 200~240V	AC: 200~240V	AC: 200~240V	AC: 200~240V	AC: 200~240V	AC: 200~240V	AC: 200~240V
Drive Mode	Constant Current 64S	Constant Current 54S	Constant Current 48S	Constant Current 48S	Constant Current 40S	Constant Current 32S	Constant Current 26S	Constant Current 20S
Frame Rate (Hz)	50&60	50&60	50&60	50&60	50&60	50&60	50&60	50&60
Refresh Rate (Hz)	≥3840	≥3840	≥3840	≥3840	≥3840	1920&3840	1920&3840	1920&3840
Lifetime (hrs)	100,000	100,000	100,000	100,000	100,000	100,000	100,000	100,000
Operation Temperature (°C)	-10 ~ 40	-10 ~ 40	-10 ~ 40	-10 ~ 40	-10 ~ 40	-10 ~ 40	-10 ~ 40	-10 ~ 40
Storage Temperature (°C)	-20 ~ 60	-20 ~ 60	-20 ~ 60	-20 ~ 60	-20 ~ 60	-20 ~ 60	-20 ~ 60	-20 ~ 60
Operation Humidity (RH)	10~80% no condensation							
Storage Humidity (RH)	10~85% no condensation							

Remark: 640x640x74mm cabinet dimension is available.
Above data is subject to change without prior notice.

LEYARD

LEYARD HONG KONG INTERNATIONAL CO., LIMITED

Leyard Industrial Park, No.6 Guanhe Road, Junzibu Community, Guanlan Street, Longhua District, Shenzhen, Guangdong, China

Email: intlmarketing@leyard.com | Website: www.leyardhk.com